

Sex-Linked Traits (X-Linked)

What

Who

Male Genotype:
Female Genotype:

Homologous Autosomes:

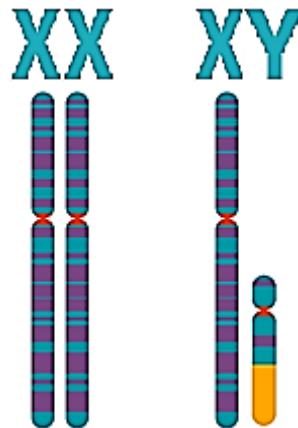
Sex Chromosomes:

- Girls
- Boys

Homologous
Autosomes:



Sex Chromosomes



Glue Hemophilia Tab Here

Glue R/G Colorblindness Tab Here

Hemophilia

**Red/Green
Colorblindness**