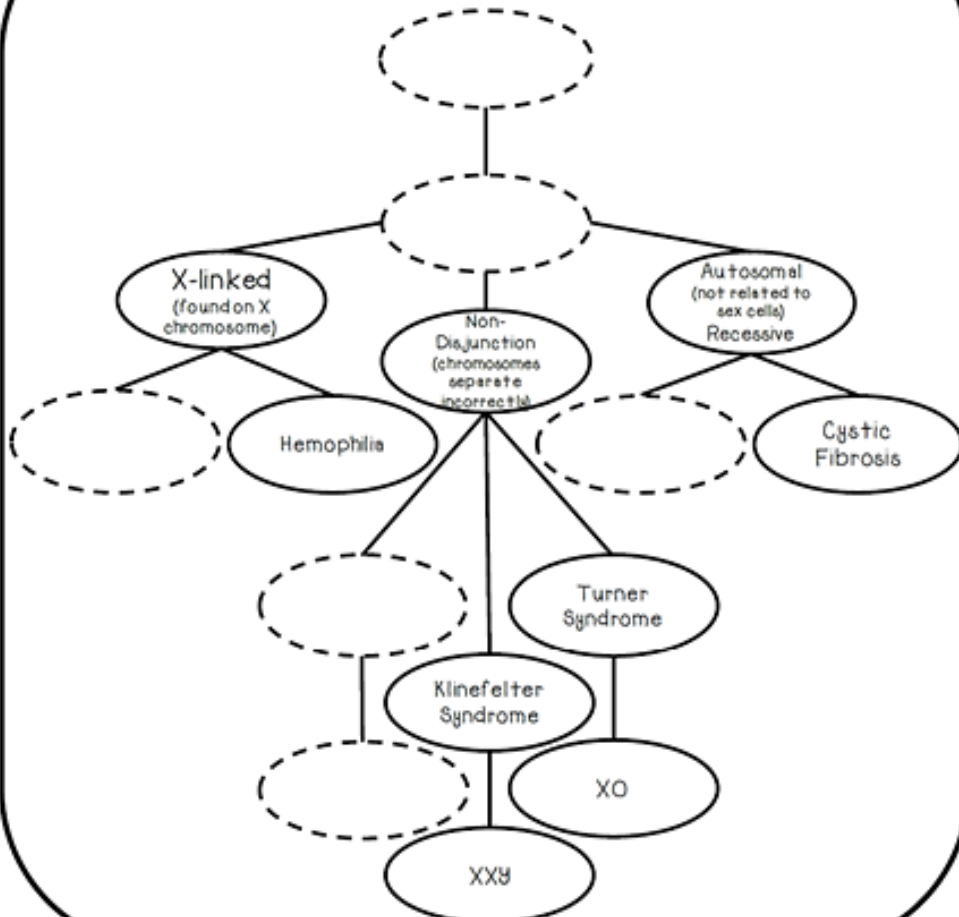


Mapping Genetic Disorders

Directions: Cut out the Mapping Genetic Disorders Concept Map and glue into your INB or, glue just the top portion to your INB depending on your teacher's instructions. Complete the concept map by cutting out the ovals below and gluing them into the appropriate spots. Flip up the map and write more detailed descriptions of these genetics disorders if needed.



- Genetic Disorders
- Patterns can include
- RedGreen Colorblindness
- Sickle Cell Anemia
- Down Syndrome
- Trisomy 21