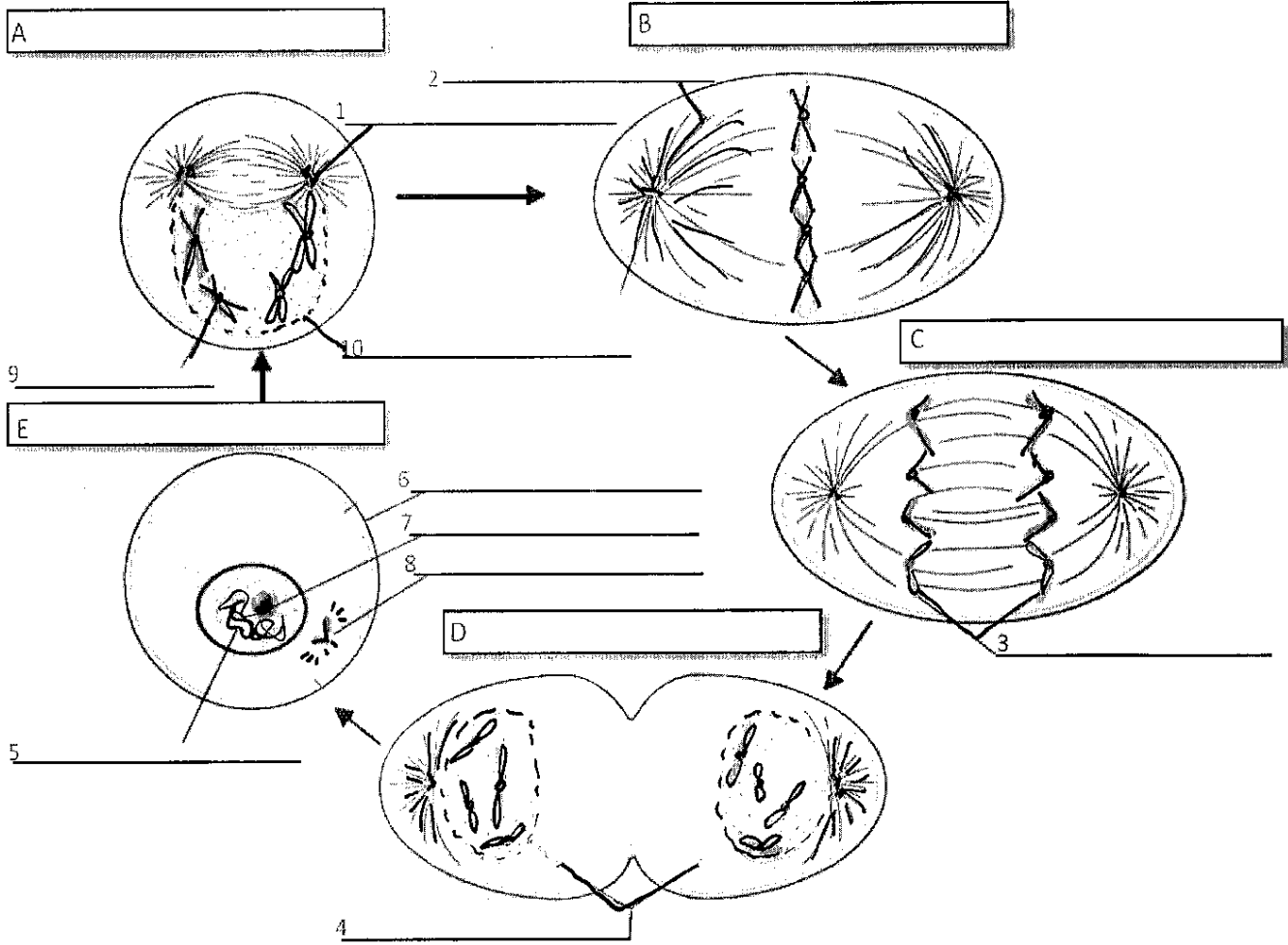


Cell Cycle Vocabulary

- _____ 1. During this phase, chromosomes separate.
- _____ 2. The period of growth of cells.
- _____ 3. DNA during interphase
- _____ 4. Organelle that helps with cell division
- _____ 5. The splitting of the cytoplasm
- _____ 6. Protein that attaches to centromere
- j 7. Identical halves of a chromosome
- _____ 8. Chromosomes first appear in this phase
- _____ 9. The period of division of a cell
- _____ 10. Chromosomes line up in the middle of the cell
- _____ 11. The middle of a chromosome
- _____ 12. The growth and division of cells
- _____ 13. The last phase of mitosis
- _____ 14. Coiled chromatin

- a. Interphase
- b. Mitosis
- c. Prophase
- d. Metaphase
- e. Anaphase
- f. Telophase
- g. Cell Cycle
- h. Chromatin
- i. Chromosome
- j. Chromatid
- k. Centromere
- l. Spindle Fiber
- m. Centriole
- n. Cytokinesis



What phase is....

- A _____
- B _____
- C _____
- D _____
- E _____

Identify the parts of the cell:

- 1. _____
- 2. _____
- 3. _____
- 4. _____
- 5. _____
- 6. _____
- 7. Nucleolus
- 8. _____
- 9. _____
- 10. _____