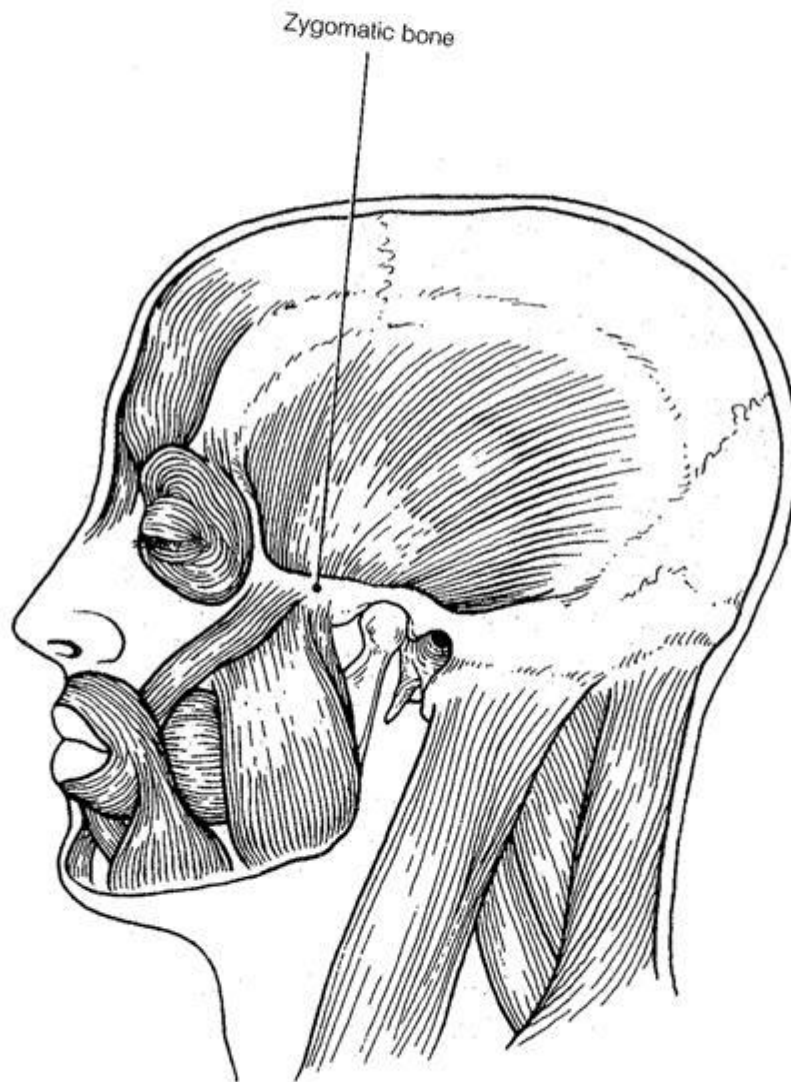


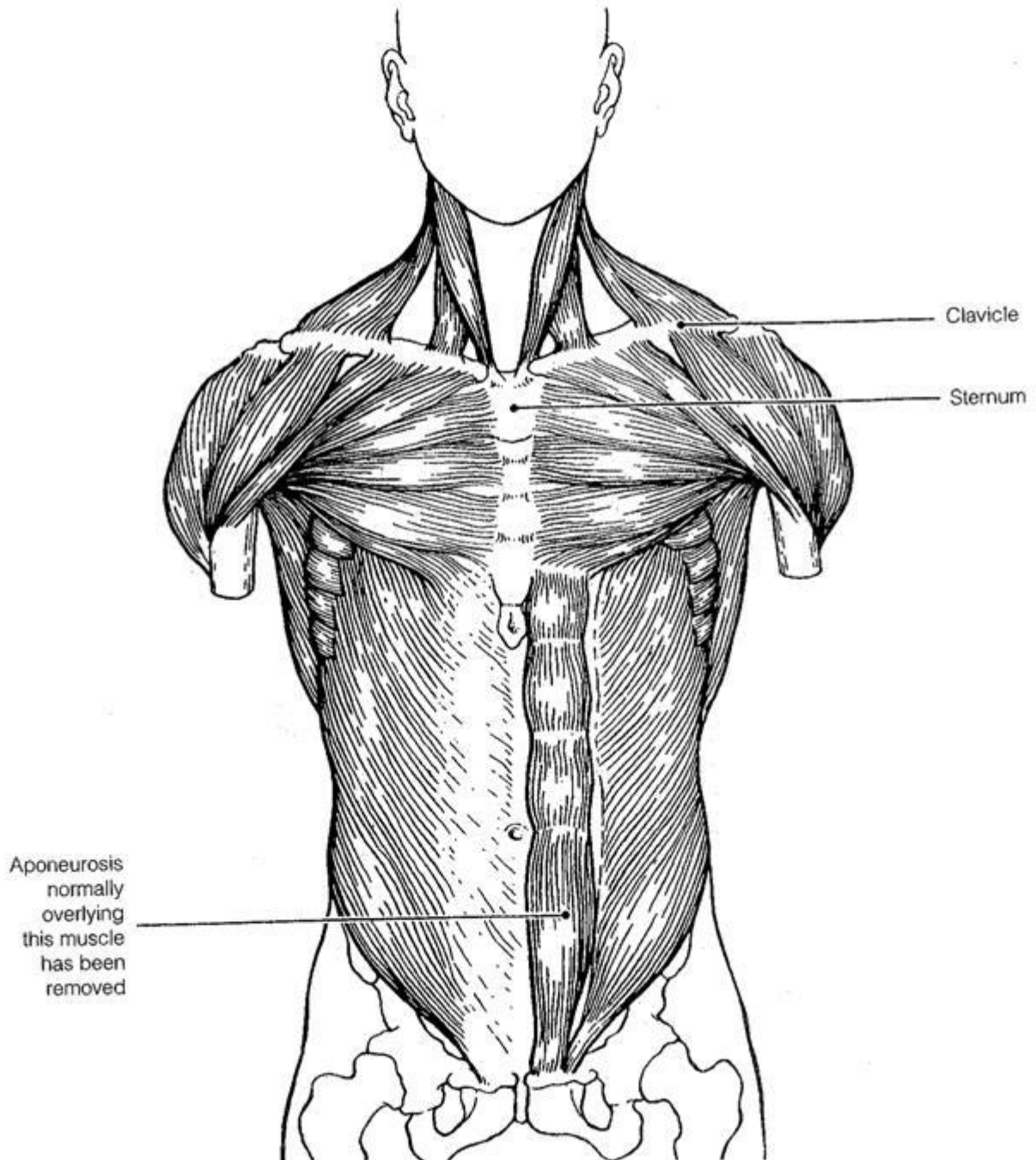
# Facial Muscles

- Buccinator*
- Temporalis*
- Frontalis*
- Sternocleidomastoid*
- Orbicularis oculi*
- Orbicularis oris*
- Zygomaticus*
- Masseter*



# Anterior Trunk Muscles

- Deltoid*
- Pectoralis major*
- Sternocleidomastoid*
- External Oblique*
- Rectus abdominis*

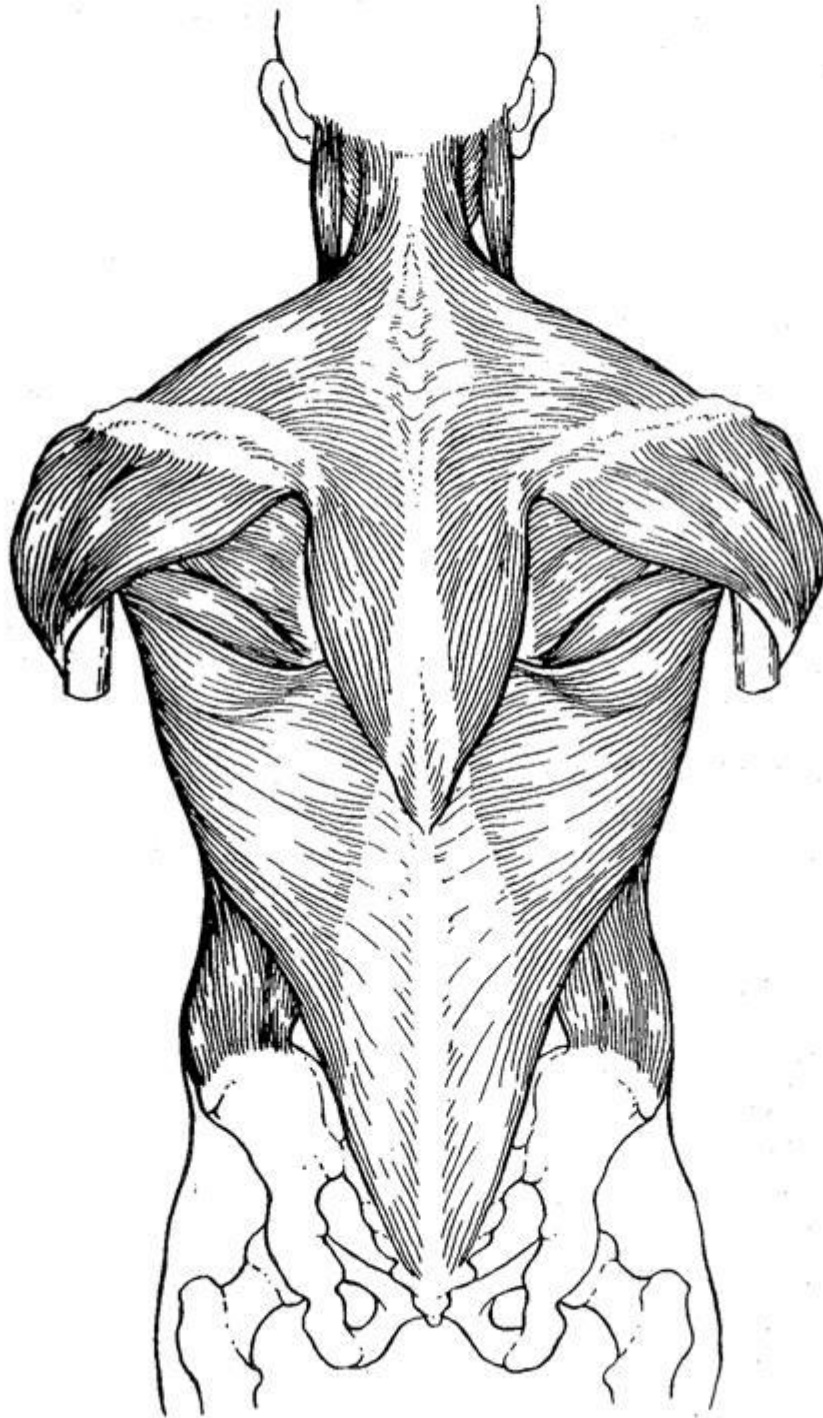


# Posterior Trunk Muscles

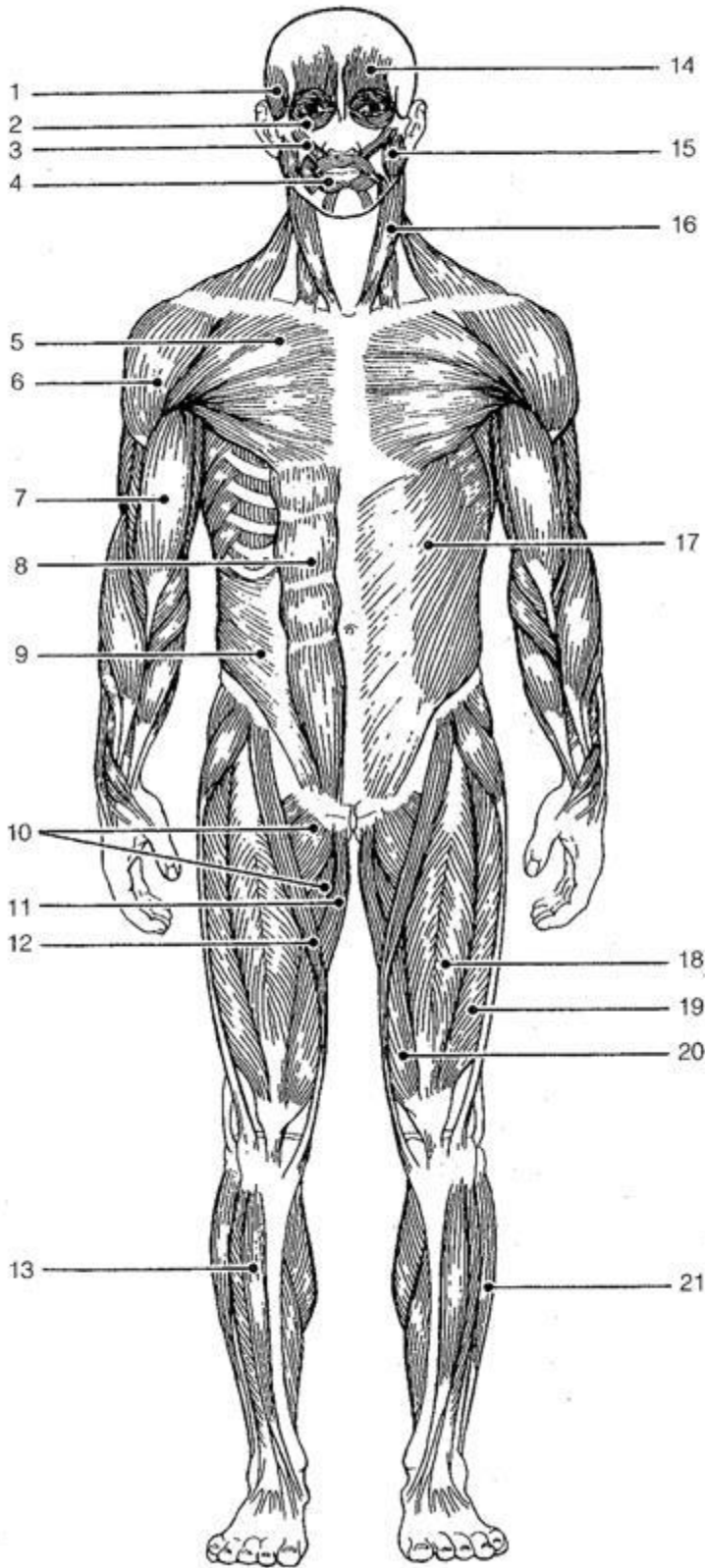
Trapezius

Latissimus Dorsi

Deltoid



# Anterior View Muscles



- Orbicularis oris*
- Pectoralis major*
- External oblique*
- Sternocleidomastoid*
- Deltoid*
- Frontalis*
- Temporalis*
- Orbicularis oculi*
- Zygomaticus*
- Masseter*
- Transversus abdominis*
- Rectus abdominis*