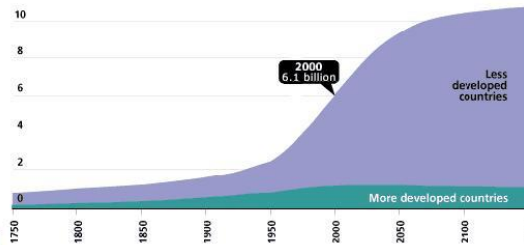


Population Growth Practice

1. The graph to the right is showing the human population growth on Earth in developed vs. less developed countries. Propose TWO reasons why you think there is more growth in less developed nations than in developed.

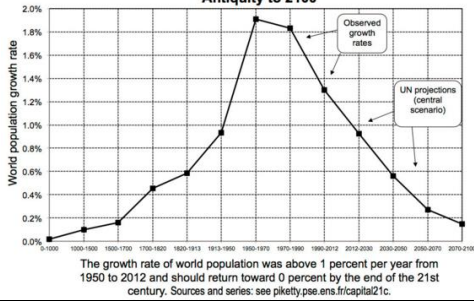
World Population Growth, 1750–2150
Population (in billions)



Source: United Nations, *World Population Prospects, The 1998 Revision*; and estimates by the Population Reference Bureau.

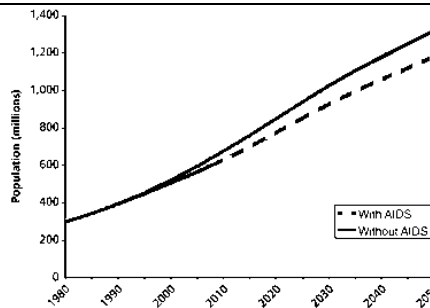
2. What type of growth has the human population experienced up until year 2000?

Figure 2.2. The growth rate of world population from Antiquity to 2100

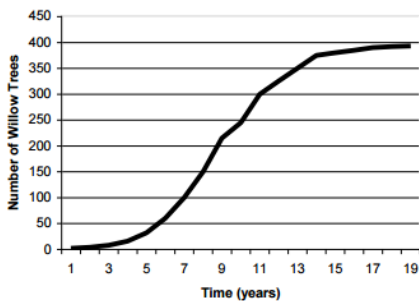


3. The graph to the right shows what percent the human population is growing. Infer one cause of the slowed growth of the human population.

4. HIV/AIDS has had a devastating effect on African populations. The graph to the right shows growth trends with AIDS in a Sub-Saharan population and if AIDS was not present. How does the incidence of AIDS change the population size?



Population Growth of Willow Trees



5. During which years was the willow trees growing exponentially?

6. What is the approximate carrying capacity of this population?