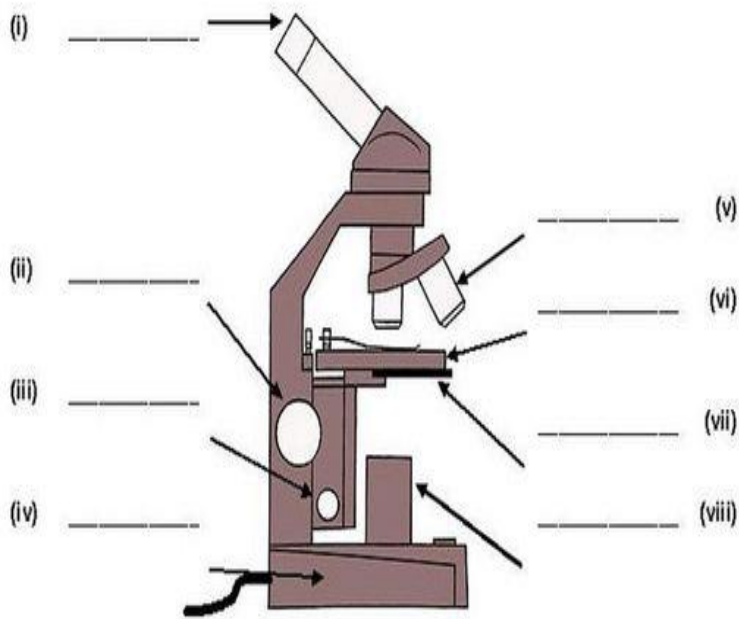


## Unit #3 Review Sheet

|   |  |  |
|---|--|--|
| <p>1. What material did Hooke look at under a microscope? What did he name them?</p> <p>Looked at:</p> <p>Named them:</p> | <p>2. What are the 3 parts to the cell theory?</p> <ol style="list-style-type: none"> <li>1. All living...</li> <li>2. Cells are the...</li> <li>3. All cells come...</li> </ol> | <p>3. Living things are "organized". List the level of organization from most simple to complex.</p> <p><b>Cells→(A.)→Organs→(B.)→(C.)</b></p> <p><b>A.)</b></p> <p><b>B.)</b></p> <p><b>C.)</b></p> |
|---|--|--|

4. Label the microscope diagram using the word bank.



**Word Bank**

- |                      |                            |               |
|----------------------|----------------------------|---------------|
| a) Light Source      | b.) Eyepiece               | c.) Base      |
| d.) Stage            | e.) Nosepiece              | f.) Diaphragm |
| g.) Stage Clips      | h.) Coarse Adjustment Knob |               |
| i.) Objective Lenses | j.) Fine Adjustment Knob   |               |

5. Match the function with the word bank.

- \_\_\_\_\_ Controls the amount of light.
- \_\_\_\_\_ Focuses while using low power.
- \_\_\_\_\_ Focuses while using medium & high power.
- \_\_\_\_\_ Raises and lowers the stage.

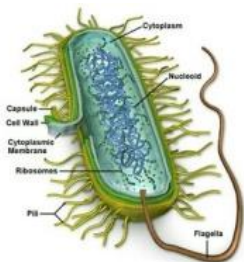
6. Answer the magnification questions below.

- \_\_\_\_\_ Magnification of low power objective.
- \_\_\_\_\_ Magnification of medium power objective.
- \_\_\_\_\_ Magnification of high power objective.
- \_\_\_\_\_ **Total magnification** while using a medium power objective.

What happens to your Field of View as magnification increases?

7. Name each of the three cells pictured below:

A.



B.

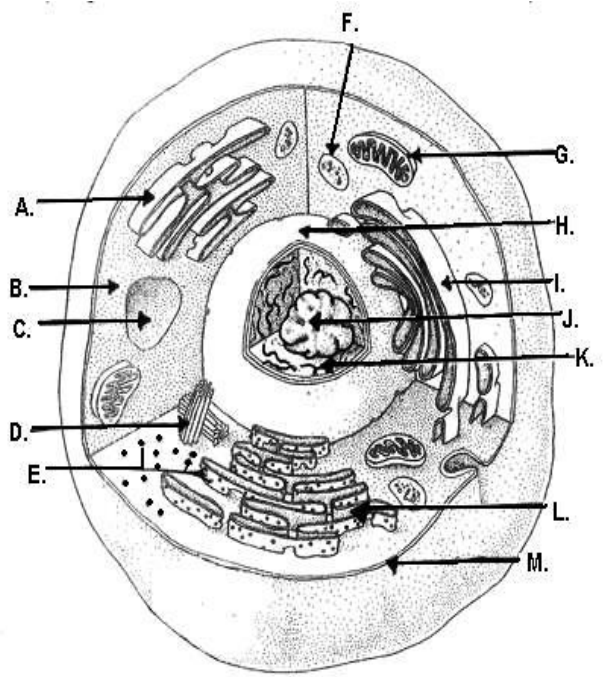


C.

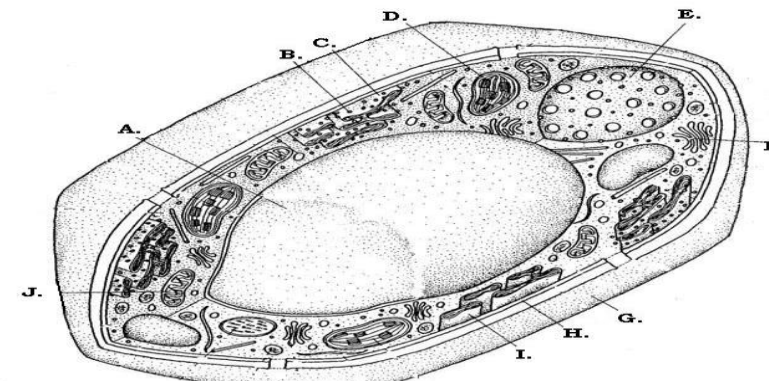


|   |   |   |
|---|---|---|
| <p>8. How is a <b>prokaryote</b> different than a <b>eukaryote</b>?</p> | <p>9. Which of the pictures in question 7 is a prokaryote?</p> <p>Which of the pictures in question 7 are eukaryotes?</p> | <p>10. List 3 ways that plants cells are different than animal cells.</p> <p>1.</p> <p>2.</p> <p>3.</p> |
|---|---|---|

11. Label the Cells Using the Word Bank

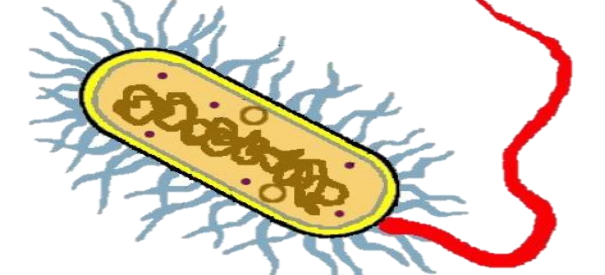


| <u>Word Bank</u> | <u>Function</u>  |
|------------------|--|
| 1. Cell Membrane | _____ Powers the cell.                                 |
| 2. Smooth ER     | _____ Package & ship protein                           |
| 3. Nucleolus     | _____ Water & nutrient storage.                        |
| 4. Rough ER      | _____ Produces ribosomes                               |
| 5. Lysosome      | _____ Fluid of the cell                                |
| 6. Chromatin     | _____ Makes protein                                    |
| 7. Mitochondria  | _____ Transports protein & has ribosomes attached      |
| 8. Ribosomes     | _____ Digestive enzymes that break down cell waste.    |
| 9. Vacuole       | _____ Thin threads of chromosomes.                     |
| 10. Cytoplasm    | _____ Controls what enters & leaves a cell.            |
| 11. Centrioles   | _____ Regulates cell activities                        |
| 12. Cell Wall    | _____ Transports protein & has no ribosomes attach     |
| 13. Golgi Bodies | _____ Site of photosynthesis                           |
| 14. Chloroplasts | _____ Helps cell divide                                |
| 15. Nucleus      | _____ Rigid structure that offers support & protection |



12. True or False:  
\_\_\_\_\_ The Cell Membrane and the Plasma Membrane are the same structure.

13. What is the difference between stem cells and specialized cells?



14. Label the cell to the right using the following terms:

- DNA
- Plasma Membrane
- Cytoplasm
- Ribosome
- Plasmid
- Cell Wall
- Flagella